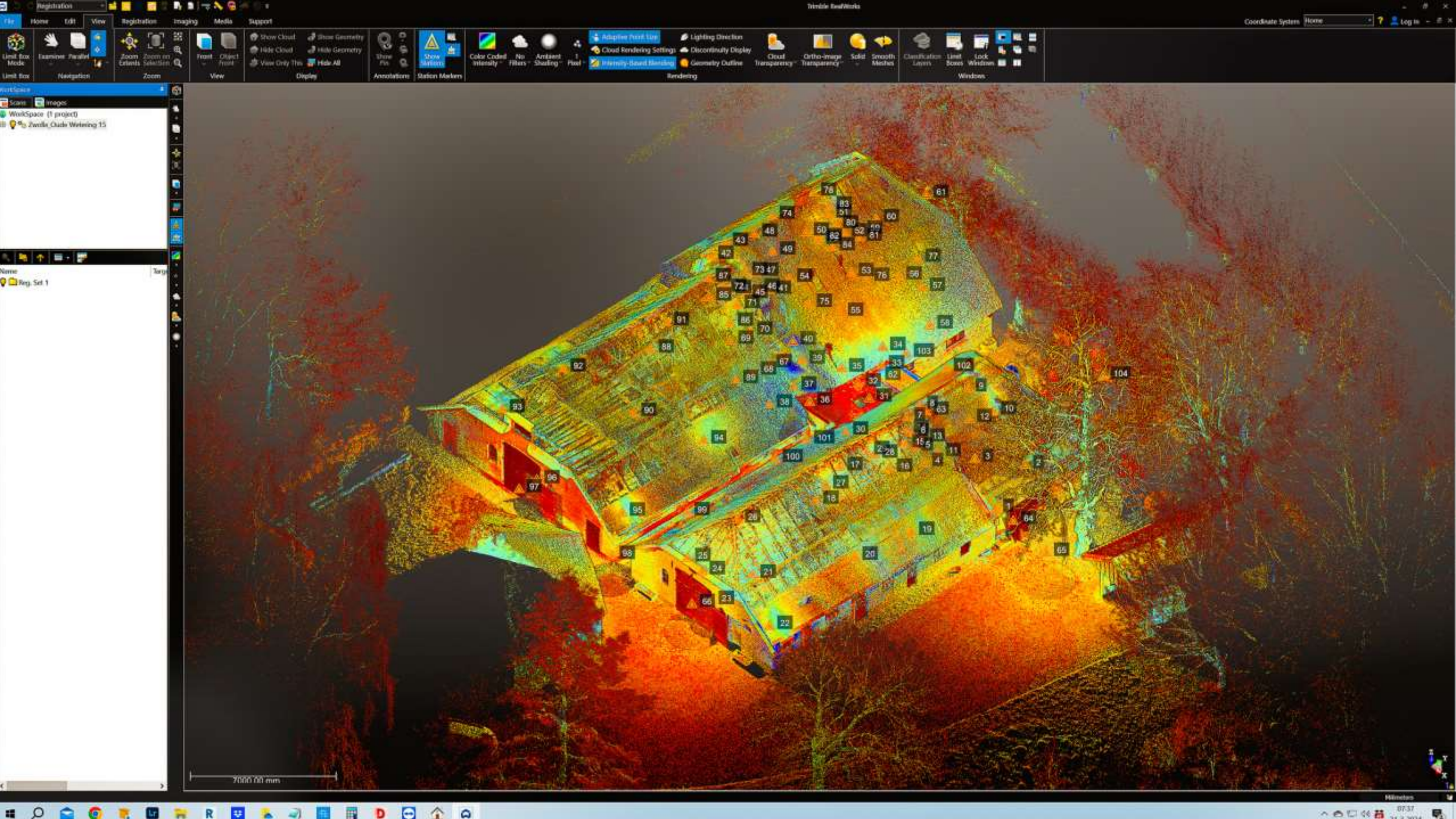


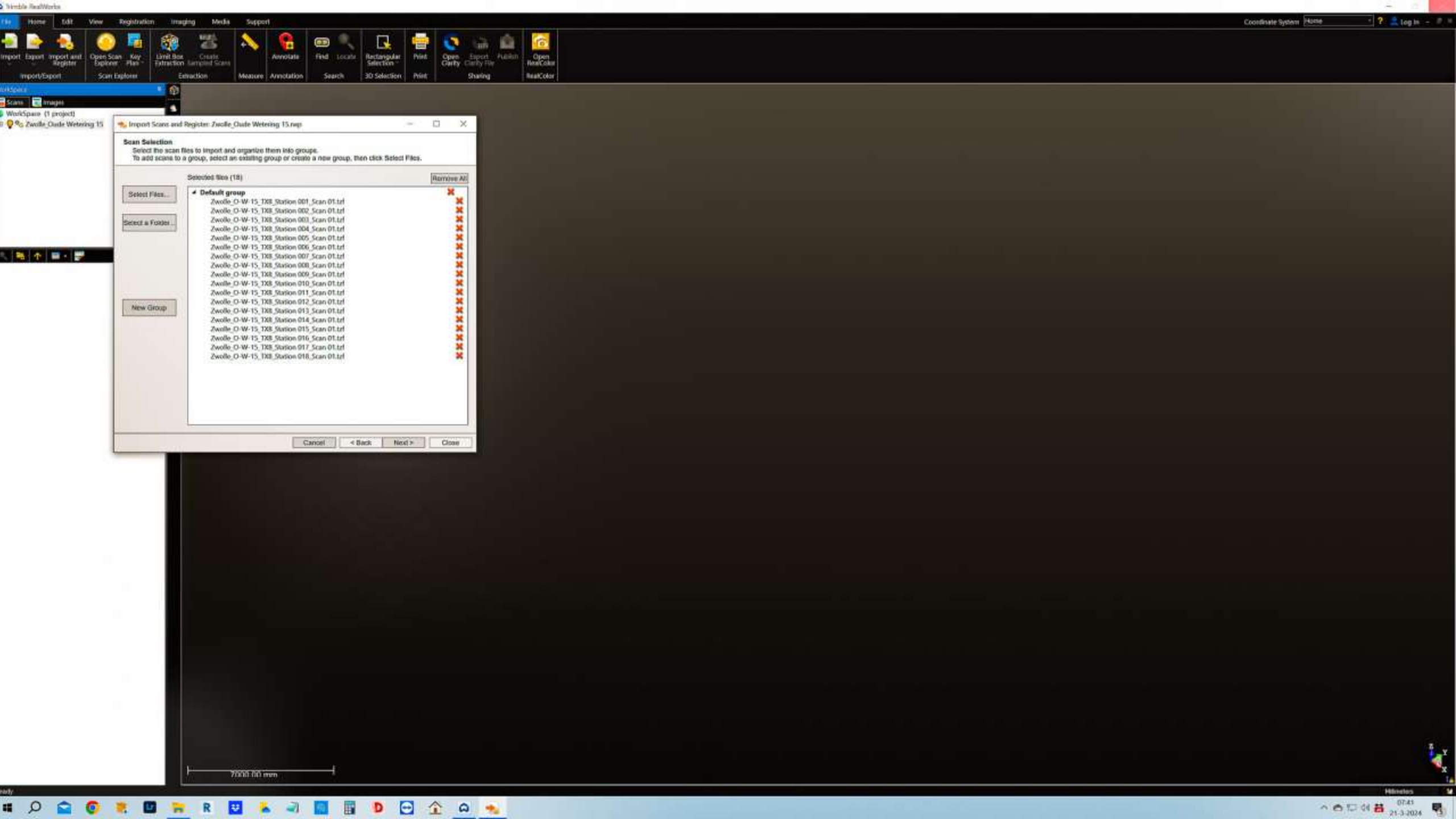
# Combinatie laserscannen X7 –TX8

Verwerking in Trimble RealWorks

reality capture







Home Edit View Registration Imaging Media Support

Import Export Import and Register Open Scan Explorer Key Files Limit Box Extraction Create Surfaces Scans Annotate Find Locate Rectangular Selection 3D Selection Print Open Clarity Export Clarity File Publish Open New Color RealColor

Import/Export Scan Explorer Extraction Measure Annotation Search 3D Selection Print Clarity Clarity File Sharing RealColor

Workspace (1 project)

Zwolle\_Oude Wetering 15

Scans Images

Import/Export Scan Explorer Extraction Measure Annotation Search 3D Selection Print Clarity Clarity File Sharing RealColor

Import Scans and Register: Zwolle\_Oude Wetering 15.rps

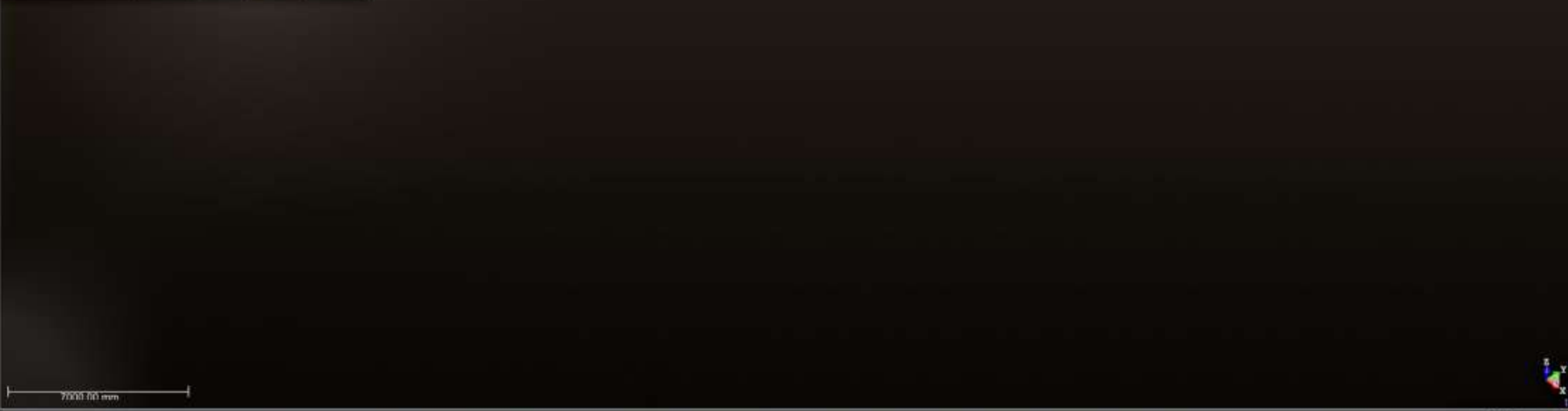
**Scan Selection**  
Select the scan files to import and organize them into groups.  
To add scans to a group, select an existing group or create a new group, then click Select Files.

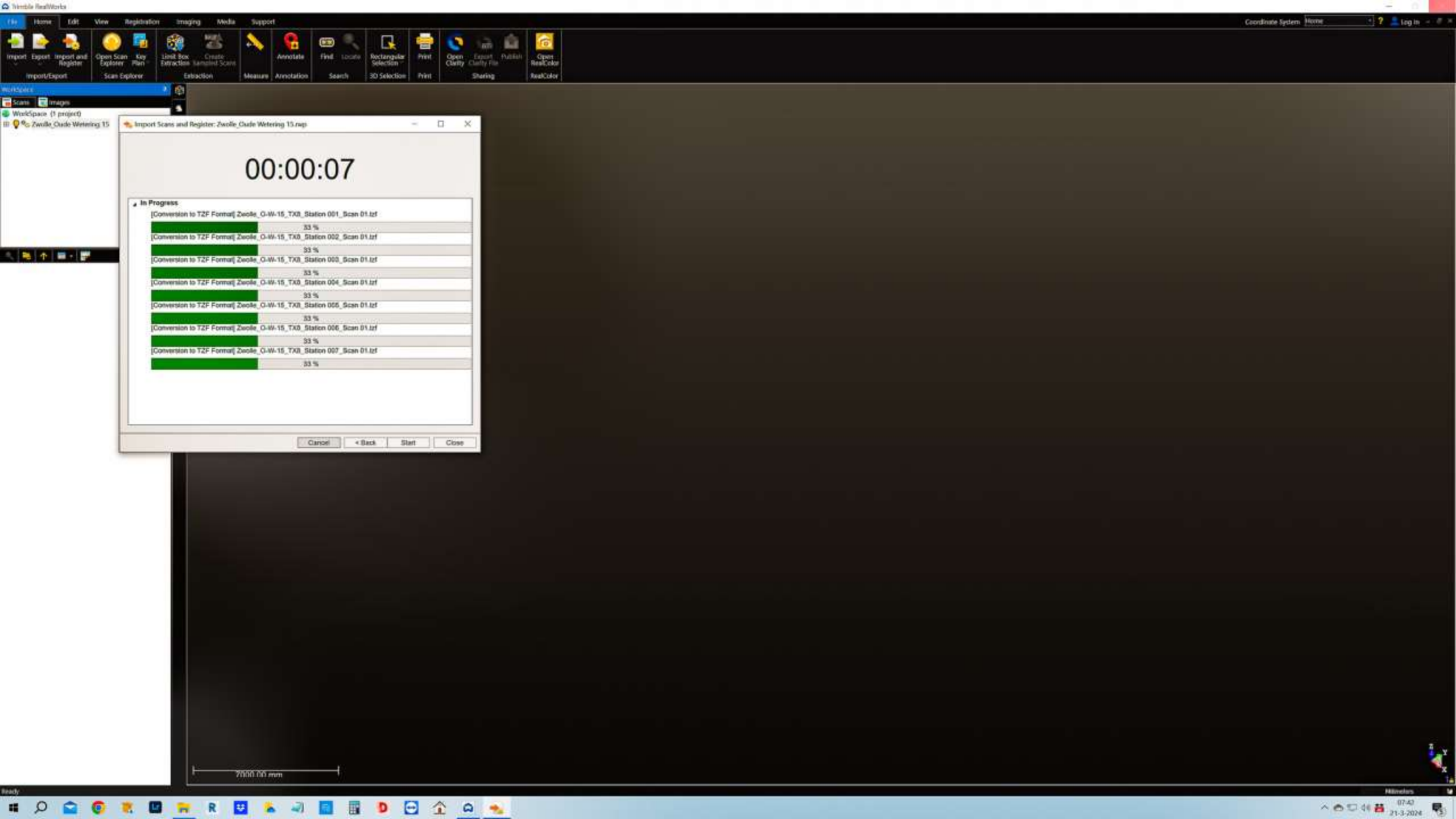
Select Files...  
Select a Folder...  
New Group

Selected files (18) Remove All

- Default group
  - Zwolle\_O-W-15\_T18\_Station 001\_Scan 01.tif
  - Zwolle\_O-W-15\_T18\_Station 002\_Scan 01.tif
  - Zwolle\_O-W-15\_T18\_Station 003\_Scan 01.tif
  - Zwolle\_O-W-15\_T18\_Station 004\_Scan 01.tif
  - Zwolle\_O-W-15\_T18\_Station 005\_Scan 01.tif
  - Zwolle\_O-W-15\_T18\_Station 006\_Scan 01.tif
  - Zwolle\_O-W-15\_T18\_Station 007\_Scan 01.tif
  - Zwolle\_O-W-15\_T18\_Station 008\_Scan 01.tif
  - Zwolle\_O-W-15\_T18\_Station 009\_Scan 01.tif
  - Zwolle\_O-W-15\_T18\_Station 010\_Scan 01.tif
  - Zwolle\_O-W-15\_T18\_Station 011\_Scan 01.tif
  - Zwolle\_O-W-15\_T18\_Station 012\_Scan 01.tif
  - Zwolle\_O-W-15\_T18\_Station 013\_Scan 01.tif
  - Zwolle\_O-W-15\_T18\_Station 014\_Scan 01.tif
  - Zwolle\_O-W-15\_T18\_Station 015\_Scan 01.tif
  - Zwolle\_O-W-15\_T18\_Station 016\_Scan 01.tif
  - Zwolle\_O-W-15\_T18\_Station 017\_Scan 01.tif
  - Zwolle\_O-W-15\_T18\_Station 018\_Scan 01.tif

Cancel < Back Next > Close





File Home Edit View Registration Imaging Media Support

Import Export Import and Register Open Scan Explorer Key Plan Link Box Extraction Create Mapped Scan Measure Annotate Find Locate Rectangular Selection 3D Selection Print Open Clarity Export Clarity File Publish Open RealColor RealColor

Workspace (1 project)

Zwolle\_Cade Wetering 15

Import Scans and Register: Zwolle\_Cade Wetering 15.rps

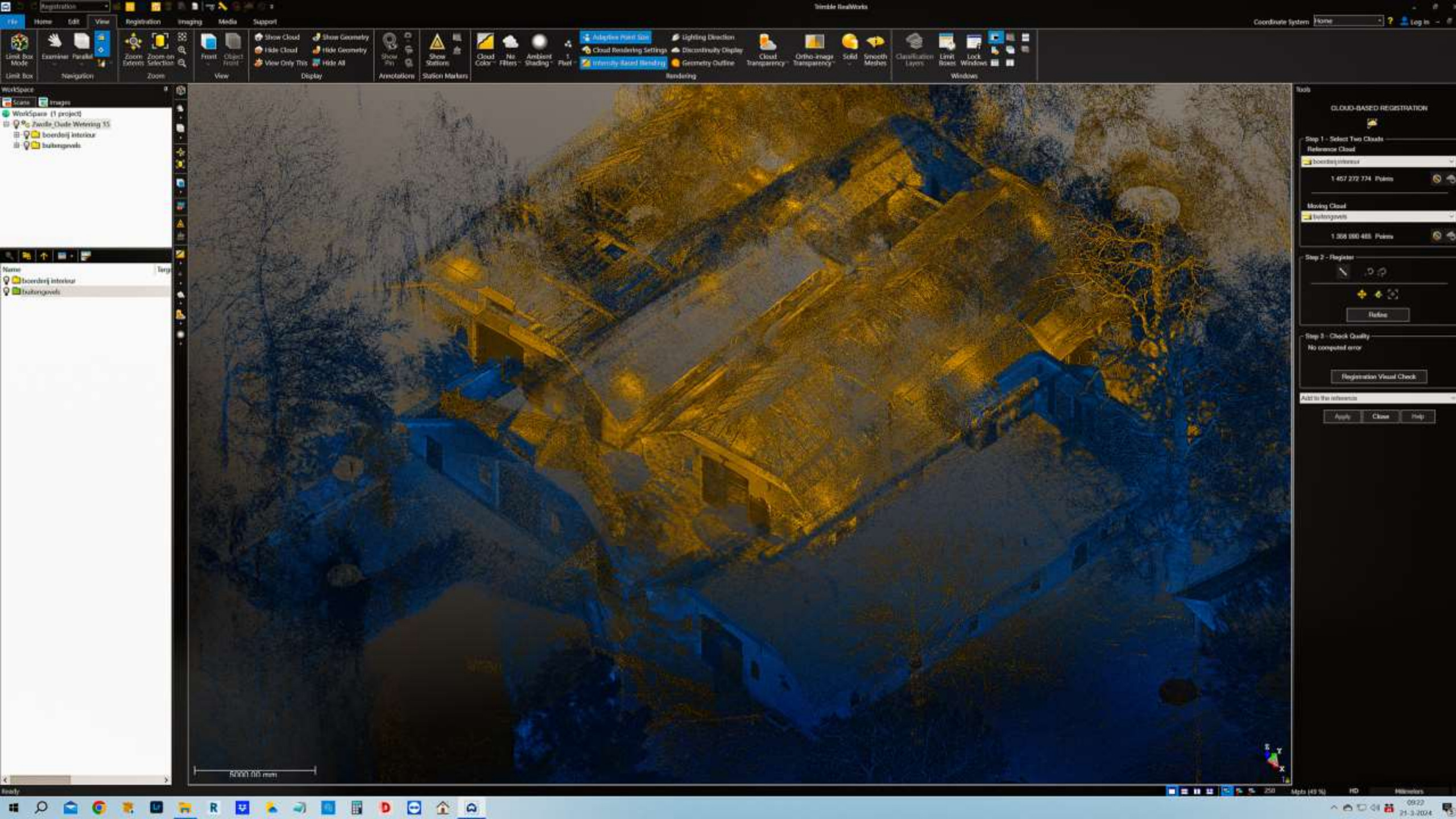
00:00:07

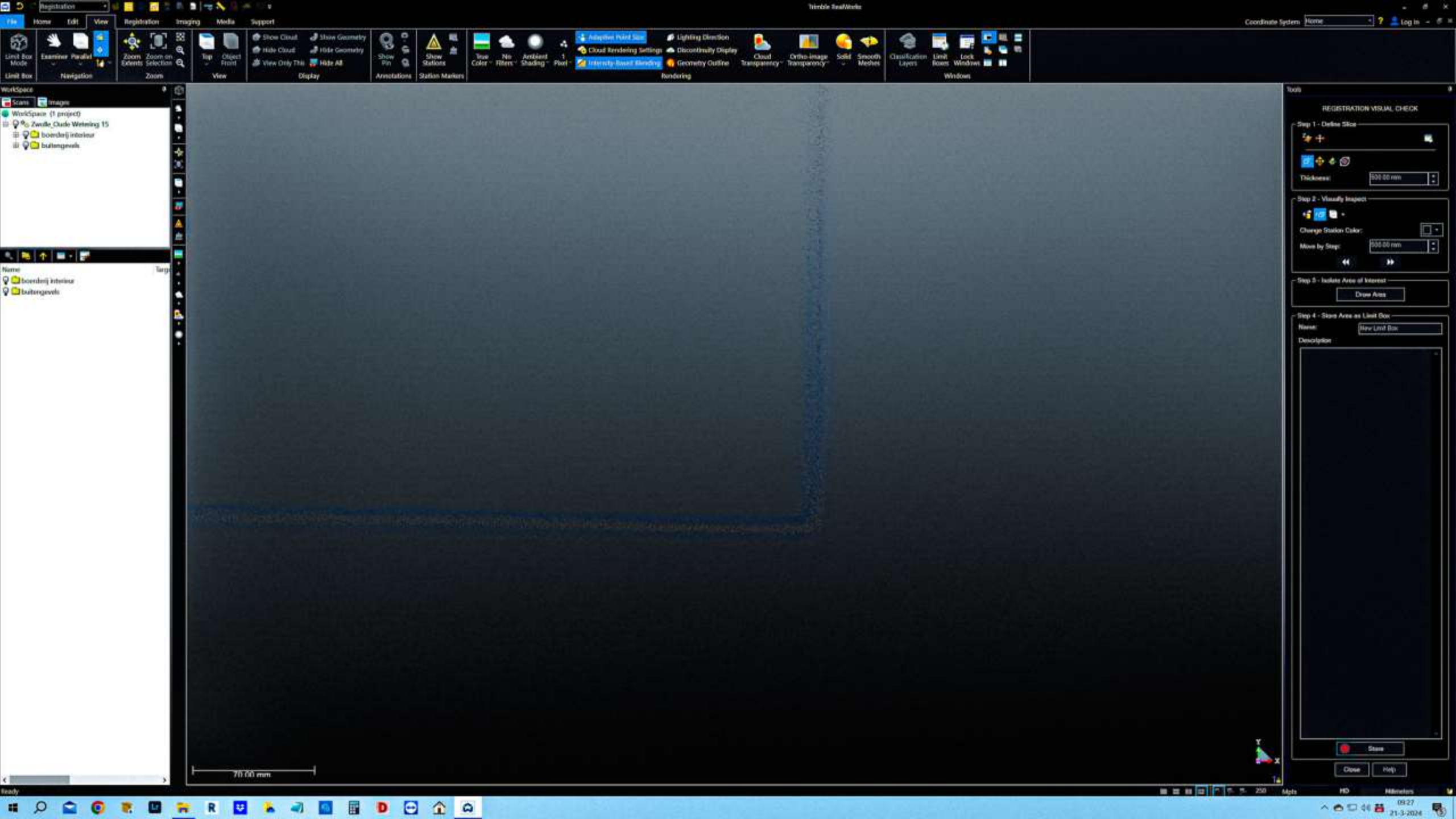
In Progress

[Conversion to T2F Format] Zwolle_O-W-15_TX0_Station 001_Scan 01.tif	33 %
[Conversion to T2F Format] Zwolle_O-W-15_TX0_Station 002_Scan 01.tif	33 %
[Conversion to T2F Format] Zwolle_O-W-15_TX0_Station 003_Scan 01.tif	33 %
[Conversion to T2F Format] Zwolle_O-W-15_TX0_Station 004_Scan 01.tif	33 %
[Conversion to T2F Format] Zwolle_O-W-15_TX0_Station 005_Scan 01.tif	33 %
[Conversion to T2F Format] Zwolle_O-W-15_TX0_Station 006_Scan 01.tif	33 %
[Conversion to T2F Format] Zwolle_O-W-15_TX0_Station 007_Scan 01.tif	33 %

Cancel < Back Start Close

7500.00 mm





File Home Edit View Registration Imaging Media Support

Limit Box Mode Examiner Parallel Navigation Zoom on Events Zoom Selection Zoom View Object Front View Only This Hide All Show Pin Show Stations Station Markers View No Filters Ambient Shading Point Cloud Rendering Settings Cloud Rendering Settings Discontinuity Display Geometry Outline Cloud Transparency Ortho Image Transparency Solid Smooth Meshes Classification Layers Limit Boxes Lock Windows Windows

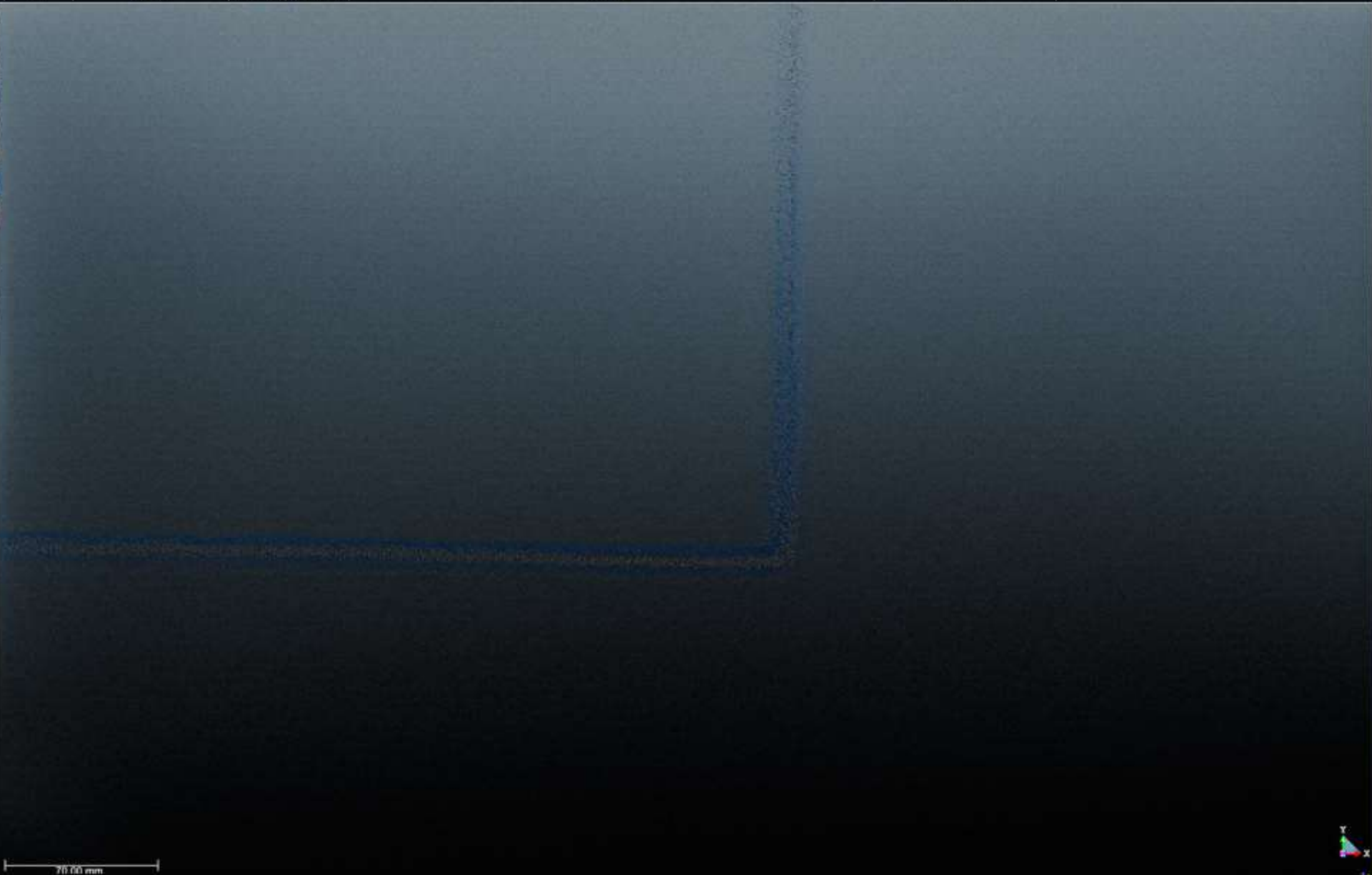
Workspace

Workspace (1 project)

- Zwolle\_Cloud Writing 15
  - boerderij interieur
  - buitengevels

Name

- boerderij interieur
- buitengevels



Tools

REGISTRATION VISUAL CHECK

Step 1 - Define Slice

Thickness: 500.00 mm

Step 2 - Visually Inspect

Change Station Color

Move by Step: 500.00 mm

Step 3 - Isolate Area of Interest

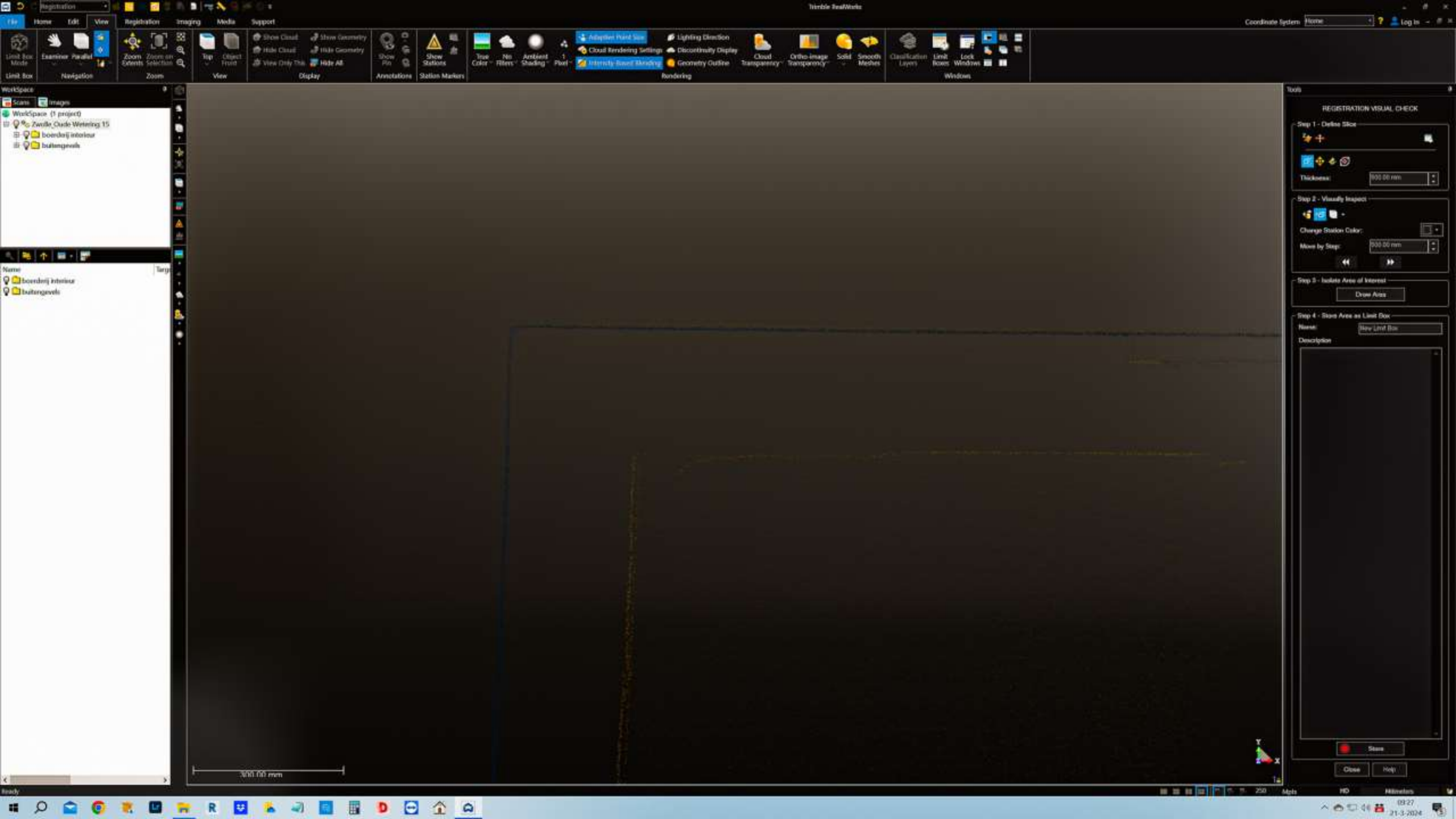
Draw Area

Step 4 - Store Area as Limit Box

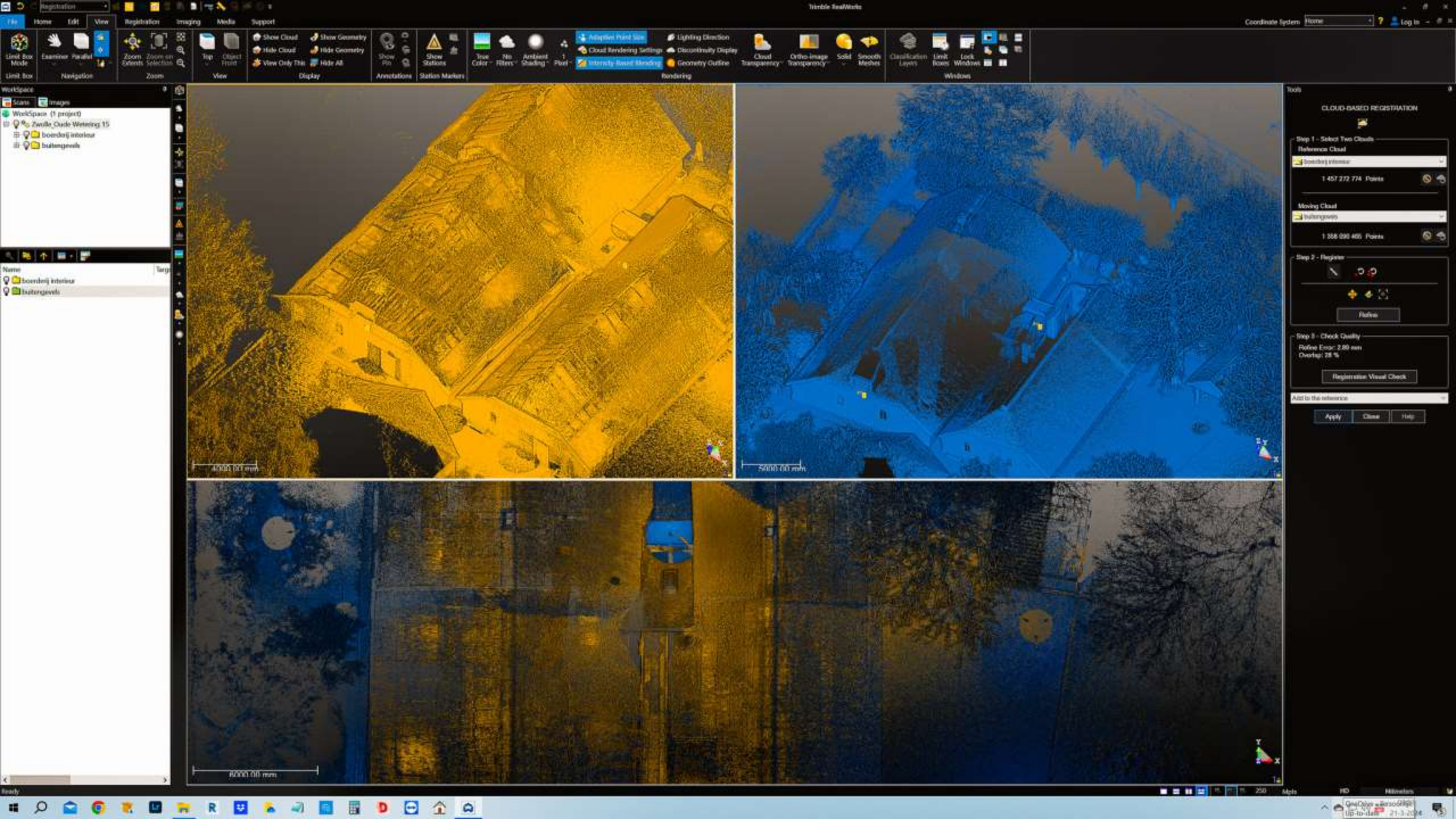
Name: New Limit Box

Description

Save Close Help

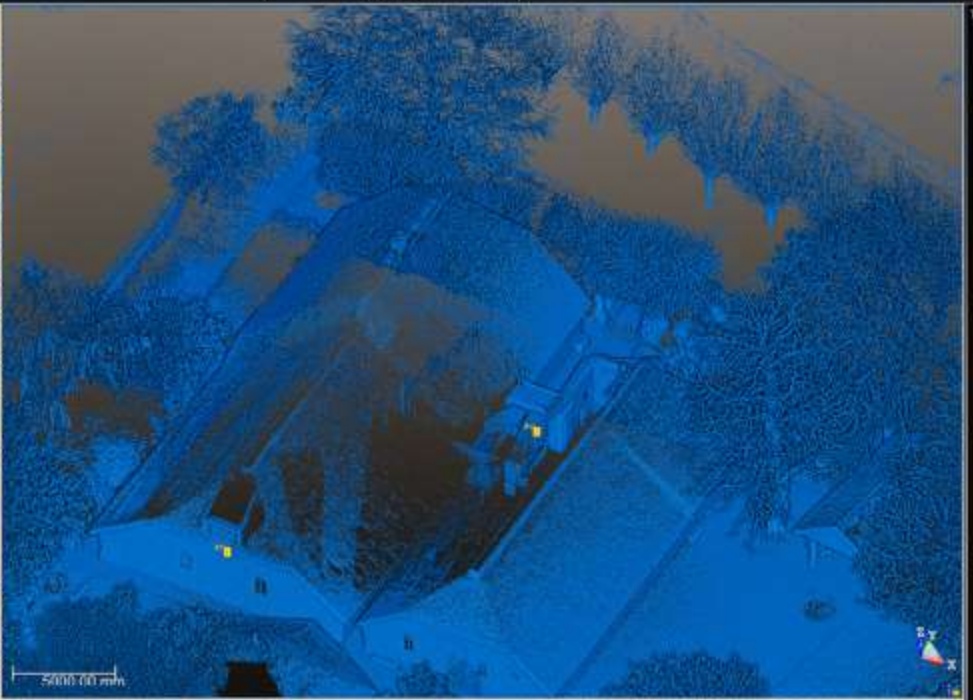
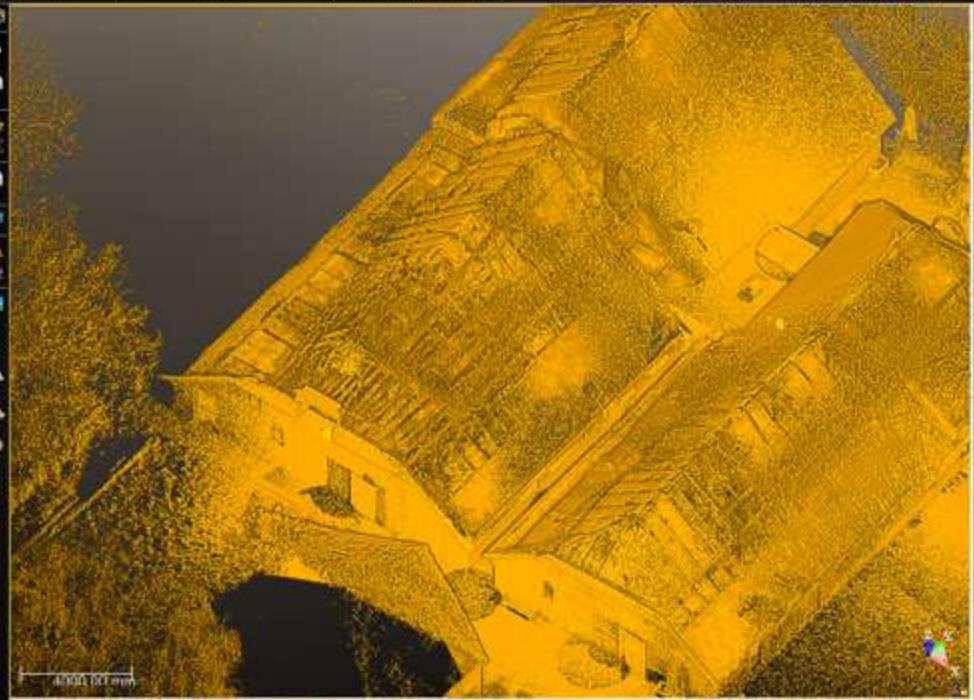






Workspace

- Scenes
- Images
- Workspace (1 project)
- Zwolle Oude Wiering 15
  - boerdagj interieur
  - buitengevels



Tools

### CLOUD-BASED REGISTRATION

Step 1 - Select Two Clouds

Reference Cloud  
boerdagj interieur  
1 407 772 774 Points

Moving Cloud  
buitengevels  
1 368 090 486 Points

Step 2 - Register

Refine

Step 3 - Check Quality

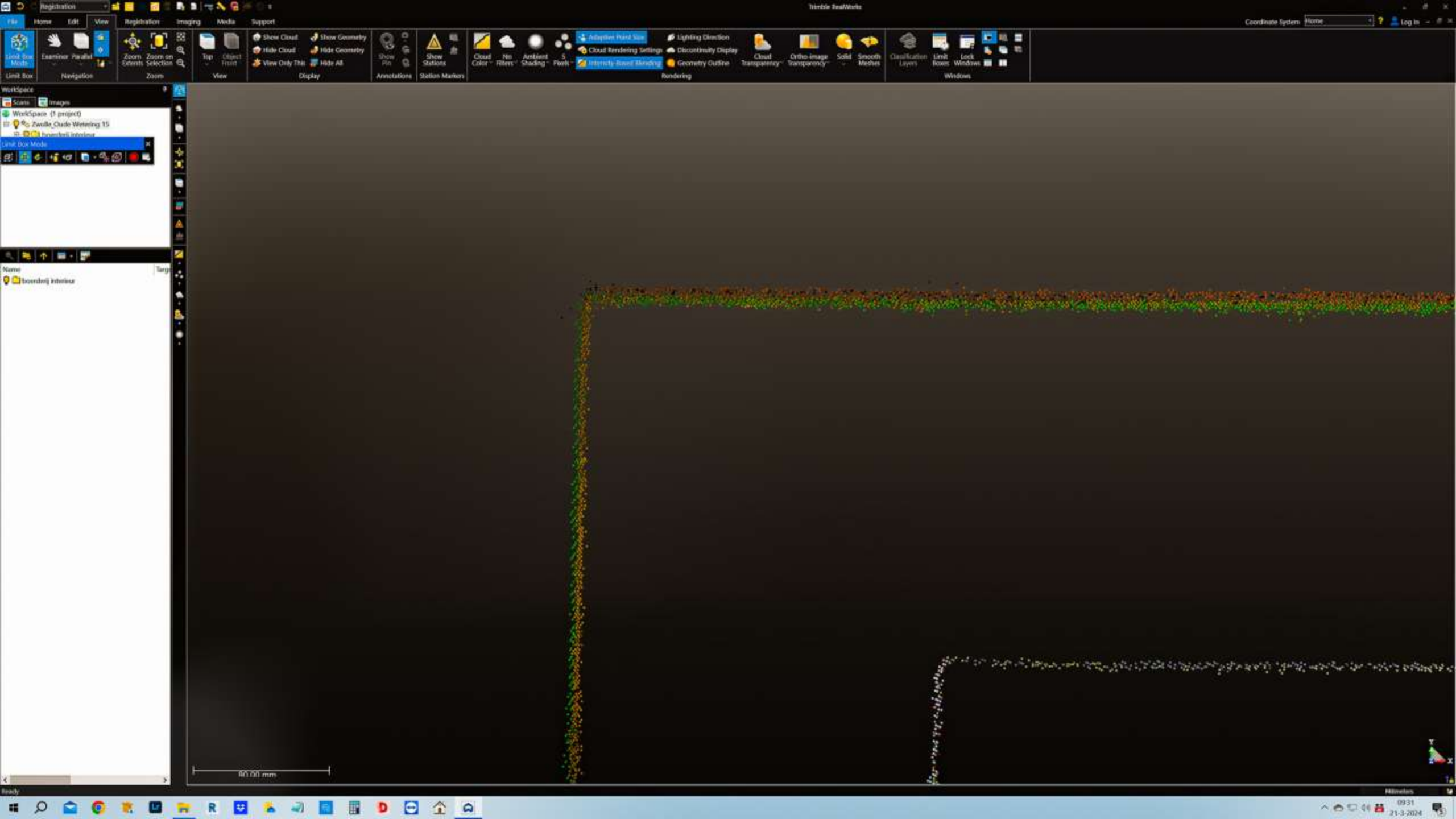
Rofree Error: 2.88 mm  
Overlap: 78 %

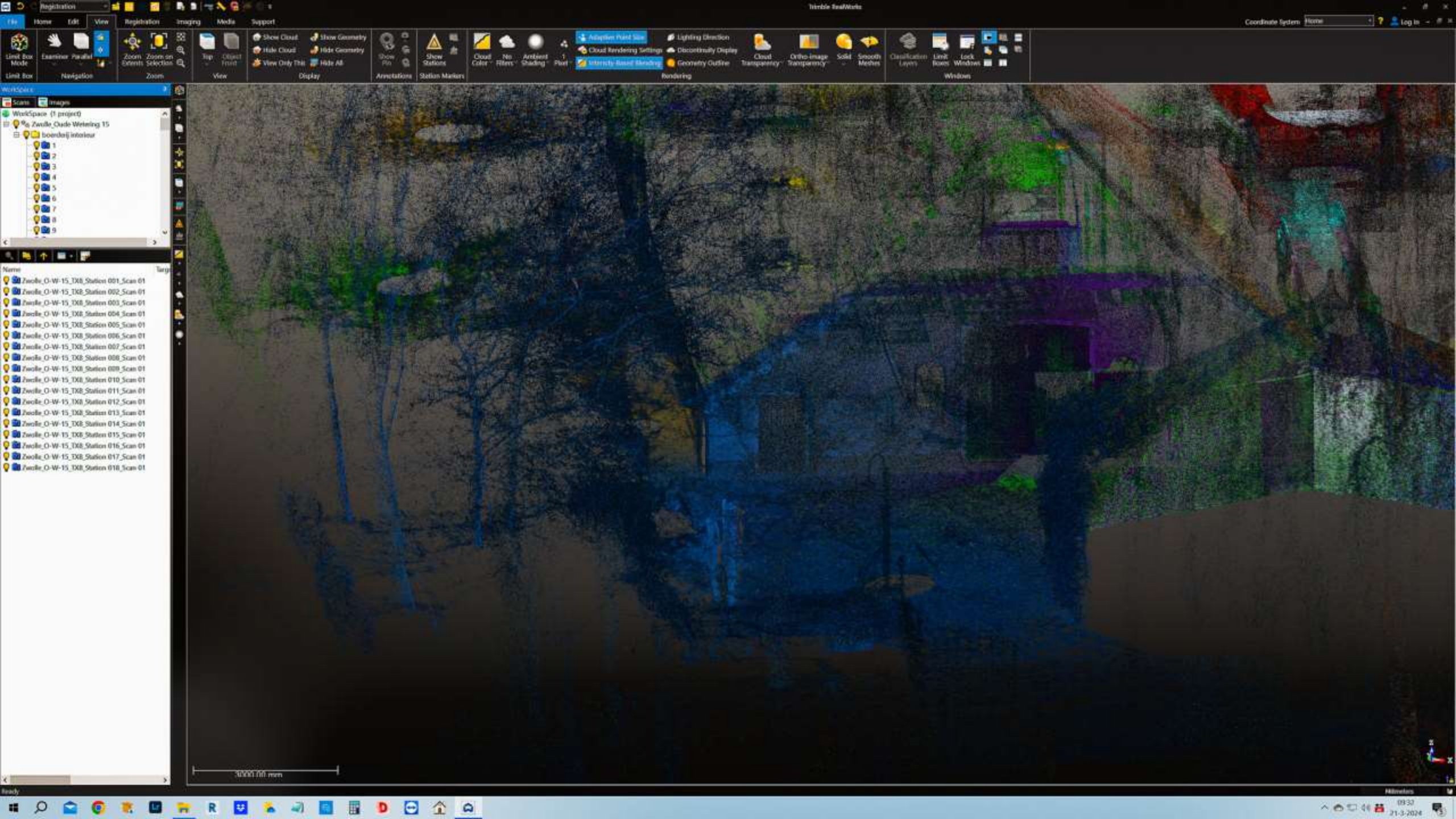
Registration Visual Check

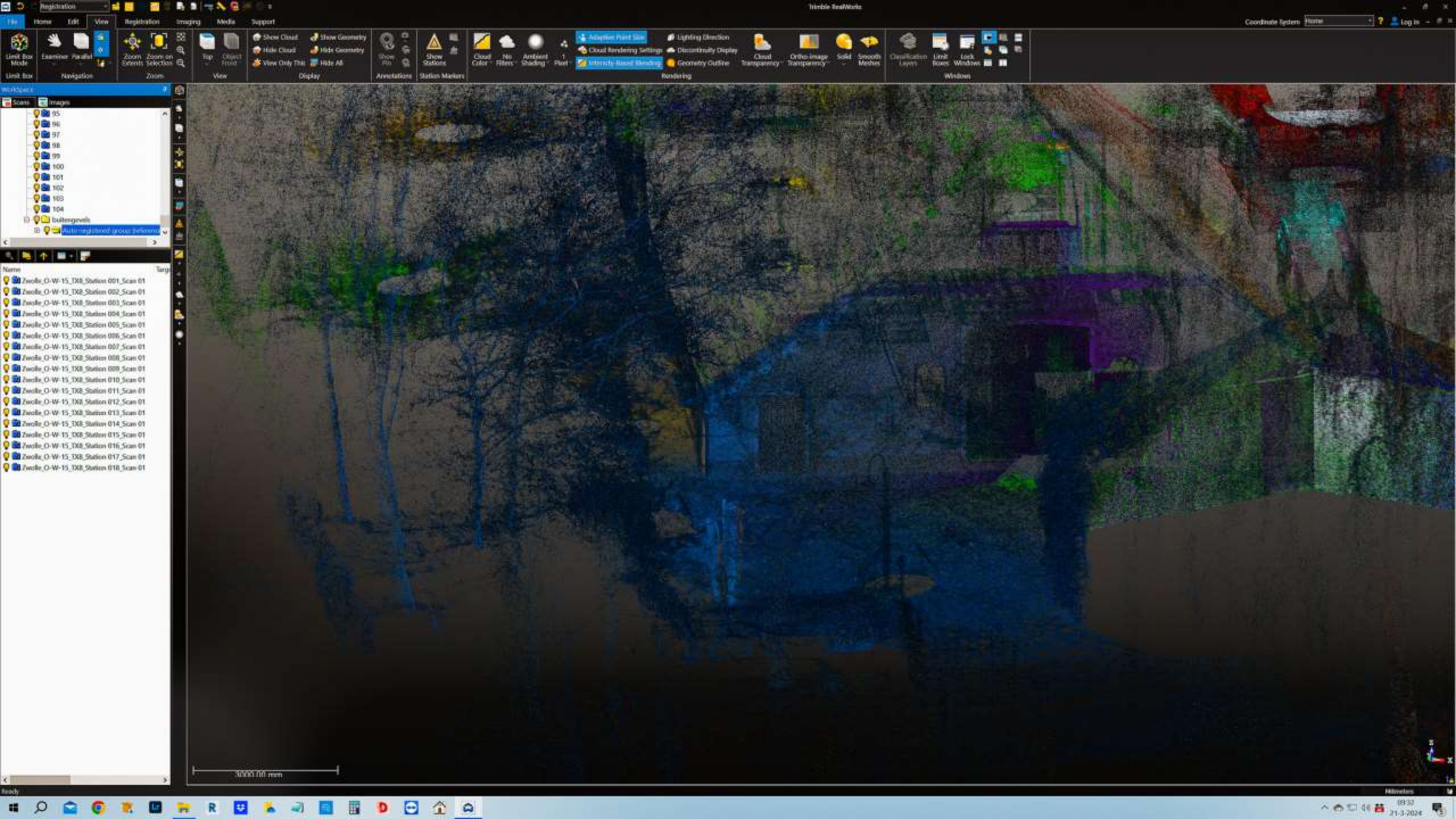
Add to the reference

Apply Close Help









File Home Edit View Registration Imaging Media Support

Limit Box Mode Navigation Zoom

Show Cloud Hide Cloud View Only This Hide All

Show Geometry Hide Geometry

Show Pin Show Stations

Cloud Color No Filters Ambient Shading Point

Adaptive Point Size Cloud Rendering Settings Intensity Based Rendering

Lighting Direction Discontinuity Display

Cloud Transparency Ortho Image Transparency Solid Smooth Meshes

Classification Layers Limit Boxes Lock Windows

Rendering

WorkSpace

Scans Images

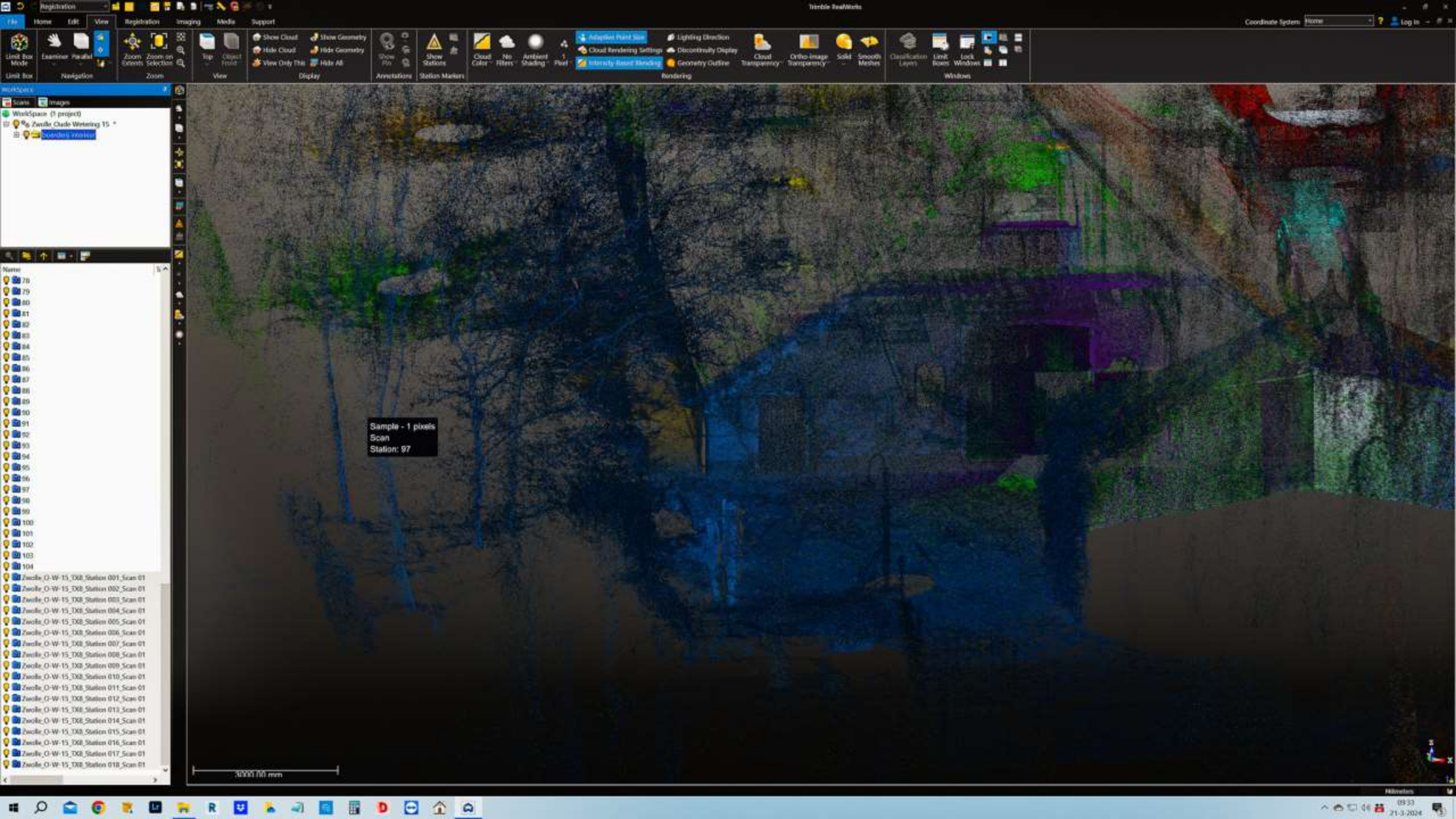
- 95
- 96
- 97
- 98
- 99
- 100
- 101
- 102
- 103
- 104

Auto registered (point reference)

Name

- Zwole\_O-W-15\_TX8\_Station 001\_Scan 01
- Zwole\_O-W-15\_TX8\_Station 002\_Scan 01
- Zwole\_O-W-15\_TX8\_Station 003\_Scan 01
- Zwole\_O-W-15\_TX8\_Station 004\_Scan 01
- Zwole\_O-W-15\_TX8\_Station 005\_Scan 01
- Zwole\_O-W-15\_TX8\_Station 006\_Scan 01
- Zwole\_O-W-15\_TX8\_Station 007\_Scan 01
- Zwole\_O-W-15\_TX8\_Station 008\_Scan 01
- Zwole\_O-W-15\_TX8\_Station 009\_Scan 01
- Zwole\_O-W-15\_TX8\_Station 010\_Scan 01
- Zwole\_O-W-15\_TX8\_Station 011\_Scan 01
- Zwole\_O-W-15\_TX8\_Station 012\_Scan 01
- Zwole\_O-W-15\_TX8\_Station 013\_Scan 01
- Zwole\_O-W-15\_TX8\_Station 014\_Scan 01
- Zwole\_O-W-15\_TX8\_Station 015\_Scan 01
- Zwole\_O-W-15\_TX8\_Station 016\_Scan 01
- Zwole\_O-W-15\_TX8\_Station 017\_Scan 01
- Zwole\_O-W-15\_TX8\_Station 018\_Scan 01

10,000,000 mm



workspace

Scans Images

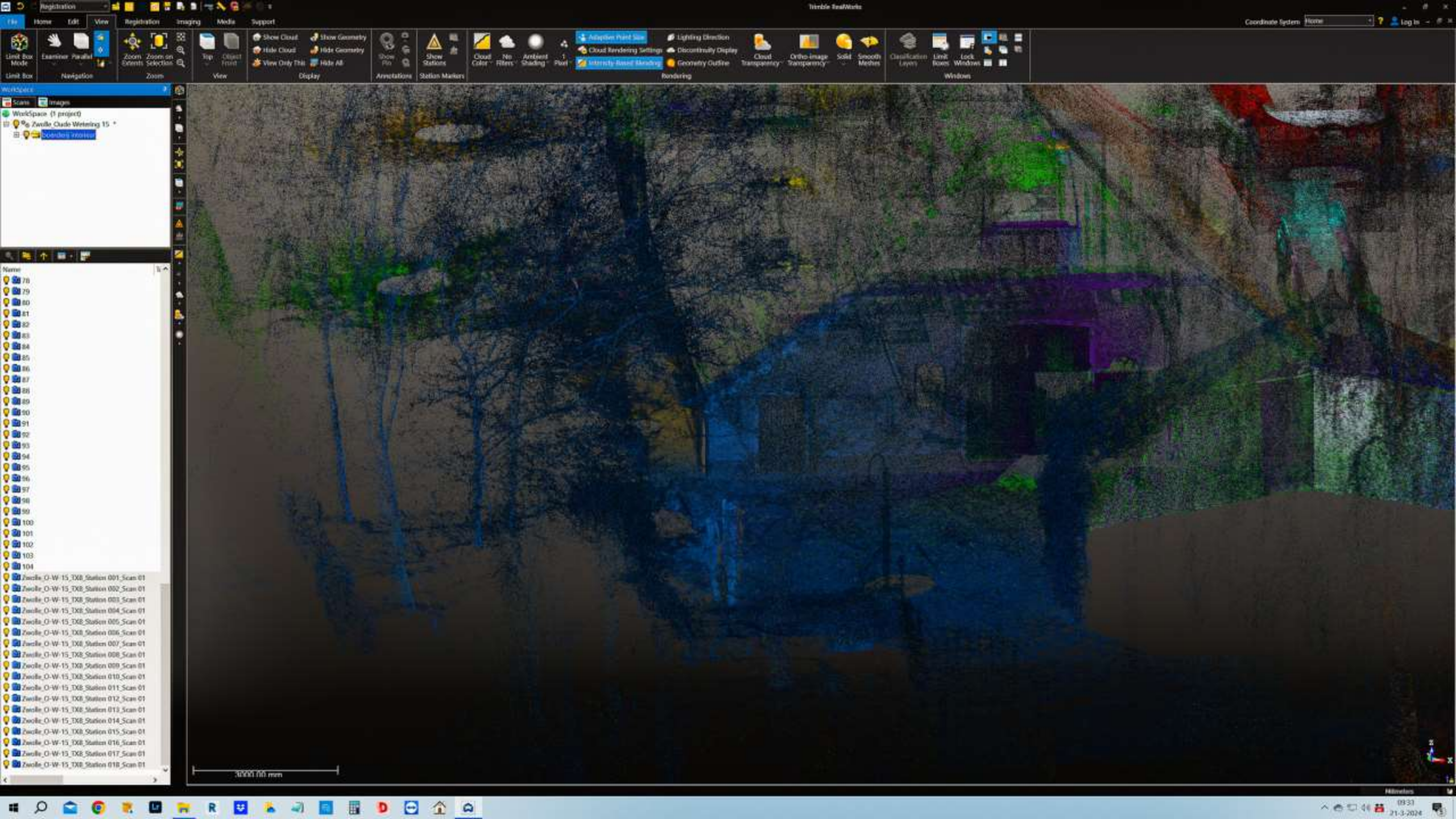
Workspace (1 project)

- Zwolle Castle Writening 15
  - Scanning results

- Name
- 78
  - 79
  - 80
  - 81
  - 82
  - 83
  - 84
  - 85
  - 86
  - 87
  - 88
  - 89
  - 90
  - 91
  - 92
  - 93
  - 94
  - 95
  - 96
  - 97
  - 98
  - 99
  - 100
  - 101
  - 102
  - 103
  - 104
  - Zwolle\_O-W-15\_TXR\_Station 001\_Scan 01
  - Zwolle\_O-W-15\_TXR\_Station 002\_Scan 01
  - Zwolle\_O-W-15\_TXR\_Station 003\_Scan 01
  - Zwolle\_O-W-15\_TXR\_Station 004\_Scan 01
  - Zwolle\_O-W-15\_TXR\_Station 005\_Scan 01
  - Zwolle\_O-W-15\_TXR\_Station 006\_Scan 01
  - Zwolle\_O-W-15\_TXR\_Station 007\_Scan 01
  - Zwolle\_O-W-15\_TXR\_Station 008\_Scan 01
  - Zwolle\_O-W-15\_TXR\_Station 009\_Scan 01
  - Zwolle\_O-W-15\_TXR\_Station 010\_Scan 01
  - Zwolle\_O-W-15\_TXR\_Station 011\_Scan 01
  - Zwolle\_O-W-15\_TXR\_Station 012\_Scan 01
  - Zwolle\_O-W-15\_TXR\_Station 013\_Scan 01
  - Zwolle\_O-W-15\_TXR\_Station 014\_Scan 01
  - Zwolle\_O-W-15\_TXR\_Station 015\_Scan 01
  - Zwolle\_O-W-15\_TXR\_Station 016\_Scan 01
  - Zwolle\_O-W-15\_TXR\_Station 017\_Scan 01
  - Zwolle\_O-W-15\_TXR\_Station 018\_Scan 01

Sample - 1 pixels  
Scan  
Station: 97

10,000.00 mm



Registration    Home    Edit    View    Registration    Imaging    Media    Support

Limit Box Mode    Examiner    Parallel    Zoom    Show Cloud    Show Geometry    Hide Cloud    Hide Geometry    View Only This    Hide All    Show Pin    Show Station    Cloud Color    No Fillers    Ambient Shading    Point    Adaptive Point Size    Cloud Rendering Settings    Intensity-Based Banding    Lighting Direction    Discontinuity Display    Cloud Transparency    Ortho Image Transparency    Solid    Smooth Meshes    Classification Layers    Limit Boxes    Lock Windows    Windows

Workspace (1 project)

- Zwolle Castle Writings 15 \*
- Scans
- Images

Name

- 78
- 79
- 80
- 81
- 82
- 83
- 84
- 85
- 86
- 87
- 88
- 89
- 90
- 91
- 92
- 93
- 94
- 95
- 96
- 97
- 98
- 99
- 100
- 101
- 102
- 103
- 104
- Zwolle\_O-W-15\_TXR\_Station 001\_Scan 01
- Zwolle\_O-W-15\_TXR\_Station 002\_Scan 01
- Zwolle\_O-W-15\_TXR\_Station 003\_Scan 01
- Zwolle\_O-W-15\_TXR\_Station 004\_Scan 01
- Zwolle\_O-W-15\_TXR\_Station 005\_Scan 01
- Zwolle\_O-W-15\_TXR\_Station 006\_Scan 01
- Zwolle\_O-W-15\_TXR\_Station 007\_Scan 01
- Zwolle\_O-W-15\_TXR\_Station 008\_Scan 01
- Zwolle\_O-W-15\_TXR\_Station 009\_Scan 01
- Zwolle\_O-W-15\_TXR\_Station 010\_Scan 01
- Zwolle\_O-W-15\_TXR\_Station 011\_Scan 01
- Zwolle\_O-W-15\_TXR\_Station 012\_Scan 01
- Zwolle\_O-W-15\_TXR\_Station 013\_Scan 01
- Zwolle\_O-W-15\_TXR\_Station 014\_Scan 01
- Zwolle\_O-W-15\_TXR\_Station 015\_Scan 01
- Zwolle\_O-W-15\_TXR\_Station 016\_Scan 01
- Zwolle\_O-W-15\_TXR\_Station 017\_Scan 01
- Zwolle\_O-W-15\_TXR\_Station 018\_Scan 01

0.000 000 mm

Windows taskbar with icons for File Explorer, Edge, and other applications. System tray shows the date and time: 21-3-2024 10:31.

